

2x1,5 Ž.TR. 76/156
TRV 15 - 5

2x TA STAD
DN 32 - 2,5

9

2 x PŘEPOUŠ
DANFOSS AVI
VIZ DETAIL

2x1 Ž.TR. 76/156
TRV 15 - 5

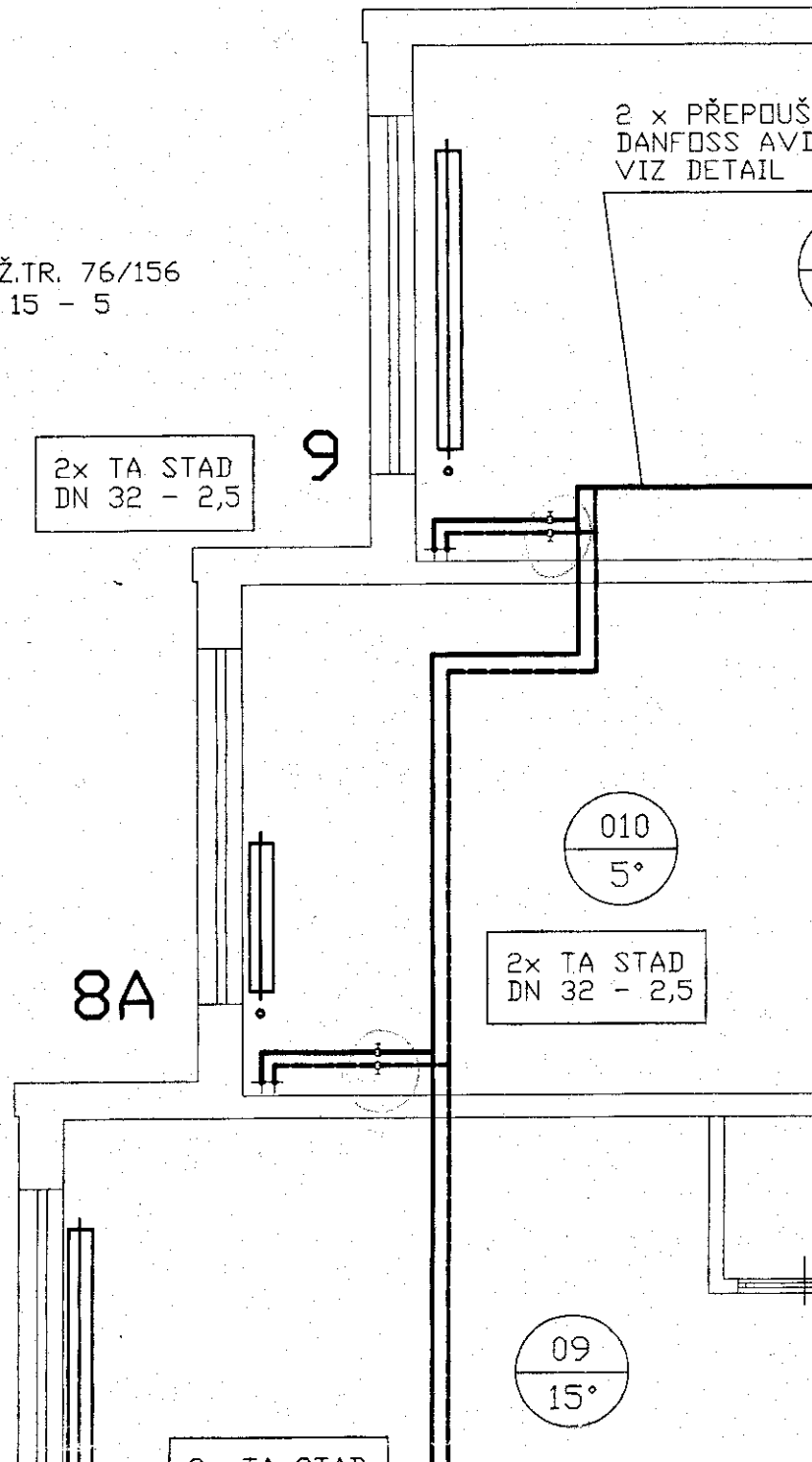
8A

2x TA STAD
DN 32 - 2,5

010
5°

2x2 Ž.TR. 76/156
TRV 15 - 6

09
15°



2x TA STAD
DN 32 - 3,0

8

5x2,5 Ž.T.R. 76/156
TRV 20 - N

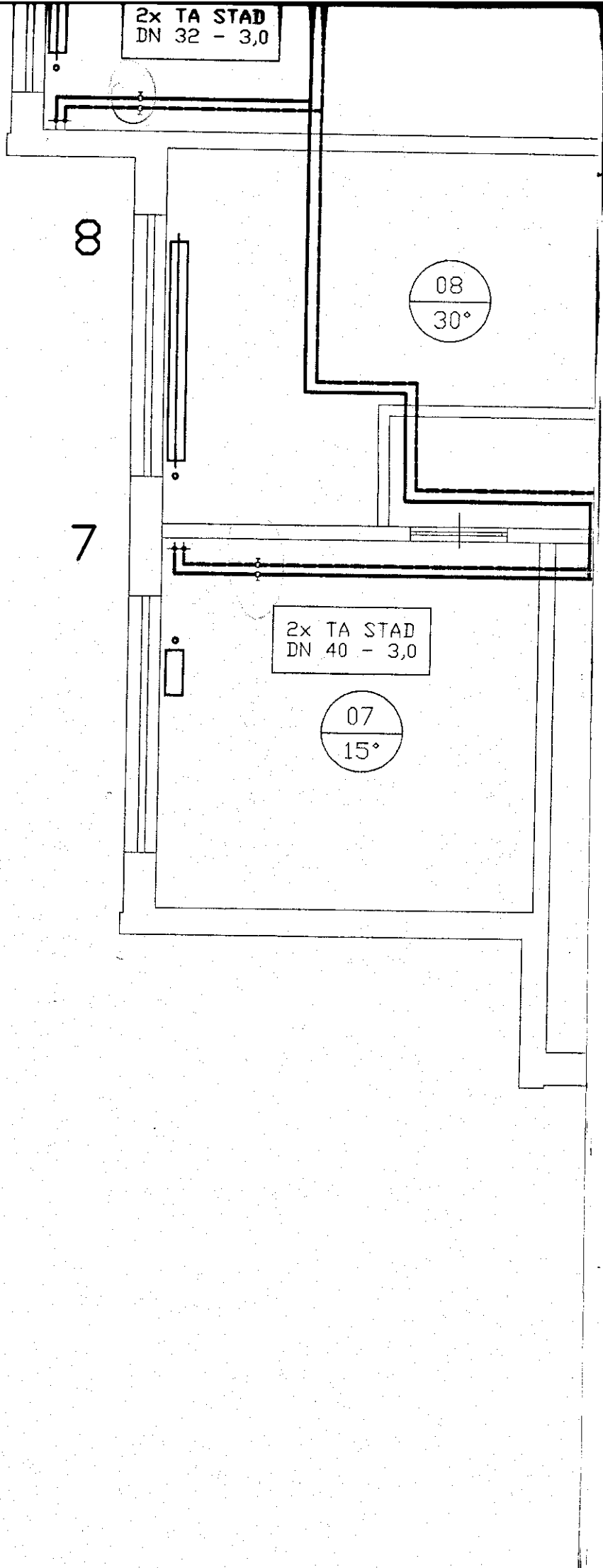
08
30°

7

9 - 900/160
TRV 15 - 6

2x TA STAD
DN 40 - 3,0

07
15°



9 - 500/160
TRV 15 - 6

5x2 Ž.T.R. 7
TRV 20 -

1

TĚCÍ VENTIL
Ø, DN 25

011
5°

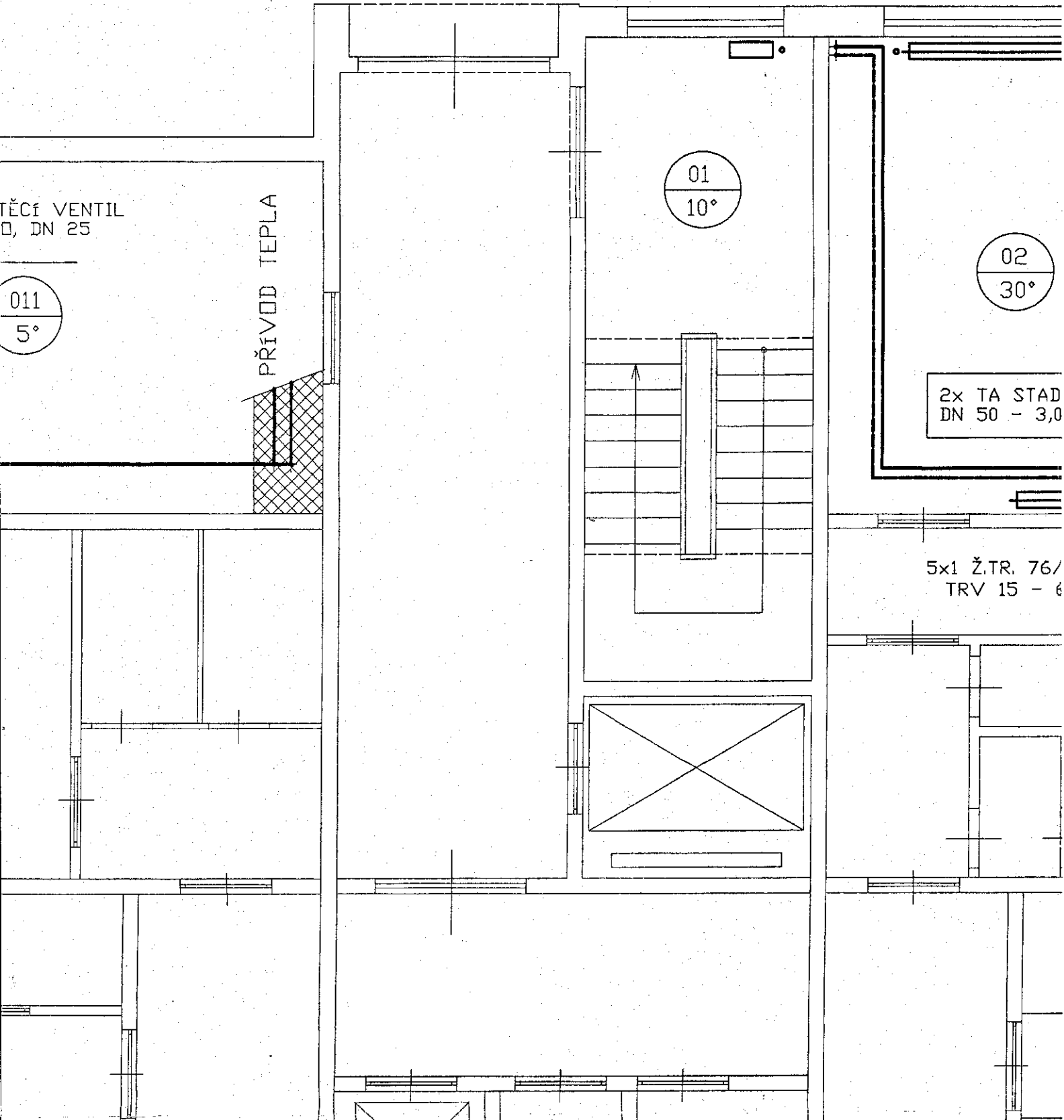
PŘÍVOD TEPLA

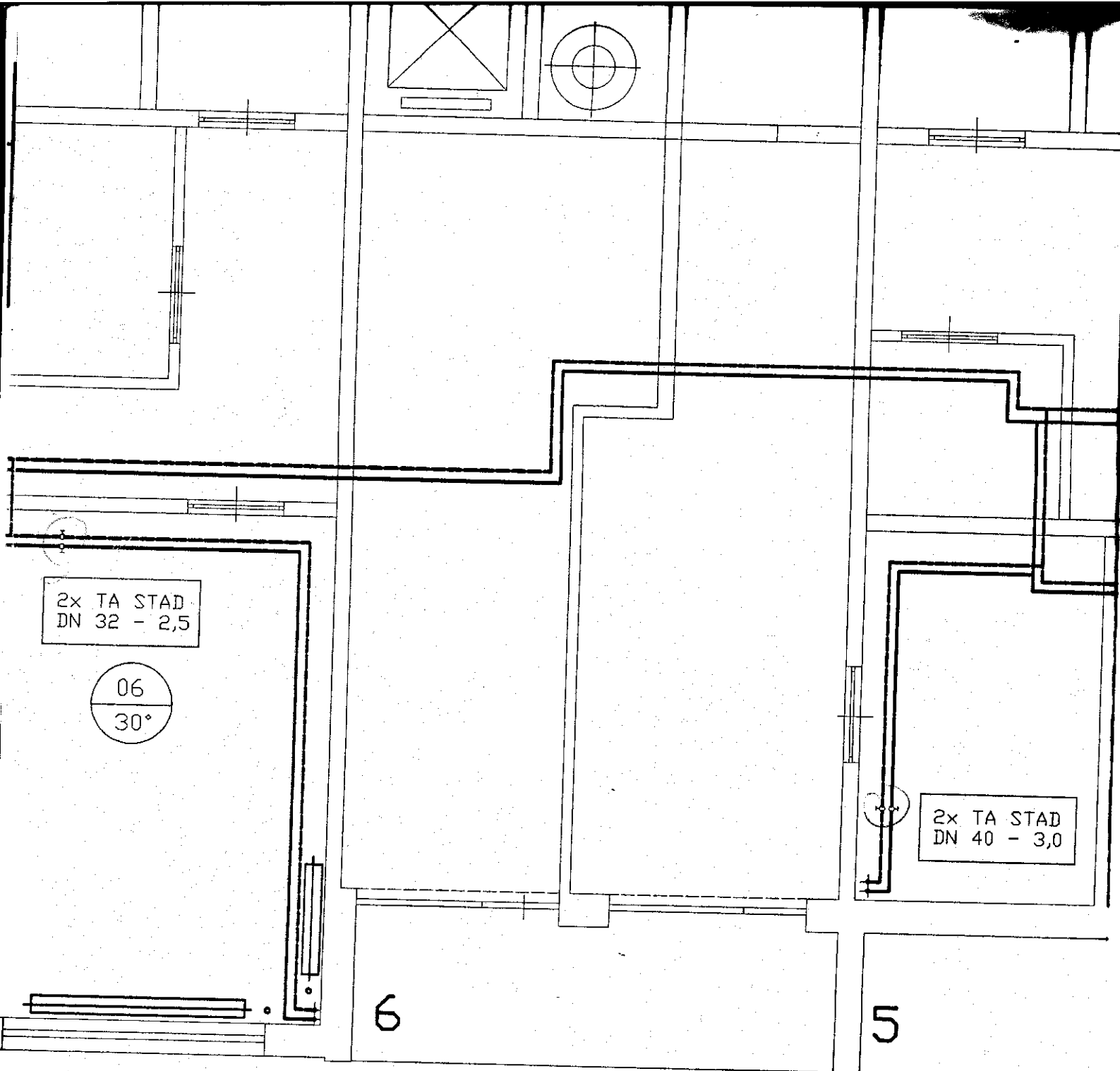
01
10°

02
30°

2x TA STAD
DN 50 - 3,0

5x1 Ž.T.R. 76/
TRV 15 - 6





5x2 Ž.T.R. 76/156
TRV 20 - N

5x1 Ž.T.R. 76/156
TRV 15 - 6

2x TA STAD
DN 32 - 2,5

05
15°

3A

2x2 Ž.TR. 76/156
TRV 15 - 6

2x TA STAD
DN 32 - 2,5

4

+ N